



BOUTIQUE APARTHOTEL

# MIDTOWN PARADISE

MANAGED DOWNTOWN APARTHOTEL

**STRESS FREE INVESTMENT OPPORTUNITY**

A modern hotel room with vibrant green walls. A large bed with white linens and green pillows is the centerpiece. To the left is a long, dark wood dresser with white drawers. A large window with dark curtains is in the background. A ceiling fan with three blades is mounted on the ceiling. A framed picture of green foliage hangs on the right wall, flanked by two black wall sconces. A small table with a vase of white flowers is next to the bed.

# WHAT IS AVAILABLE

16 PERFECTLY DESIGNED HOTEL ROOMS  
PROJECTED ROI IS AROUND 12% NET YEARLY  
CONDITION FOR EVERY UNIT: FULLY FURNISHED  
AND RENT READY ACCORDING TO THE HIGHEST  
STANDARDS IN SUCH SEGMENT OF REAL ESTATE



# TURN KEY BUSINESS NOT AN APARTMENT

- - DEDICATED BREAKFAST RESTAURANT
- - PRIVATE ELEGANT CORRIDOR
- - RECEPTION WITH DEDICATED STAFF
- - HOUSEKEEPING CREW
- - SECURITY 24/7
- - ROOM SERVICE 24/7
- - PROFESSIONAL HOTEL MANAGEMENT
- - IT TECHNOLOGIES
- - GLOBAL MARKETING

AFFORDABLE  
**EASY PAYMENT  
PLANS**

**INSTALLMENT  
WITH 10%  
INTEREST**

24,36,48 OR 60 MONTHS  
INSTALLMENT WITH  
30% DOWNPAYMENT  
DUE AT SIGNING, AND  
MONTHLY PAYMENTS  
BEGIN THE FOLLOWING  
MONTH.

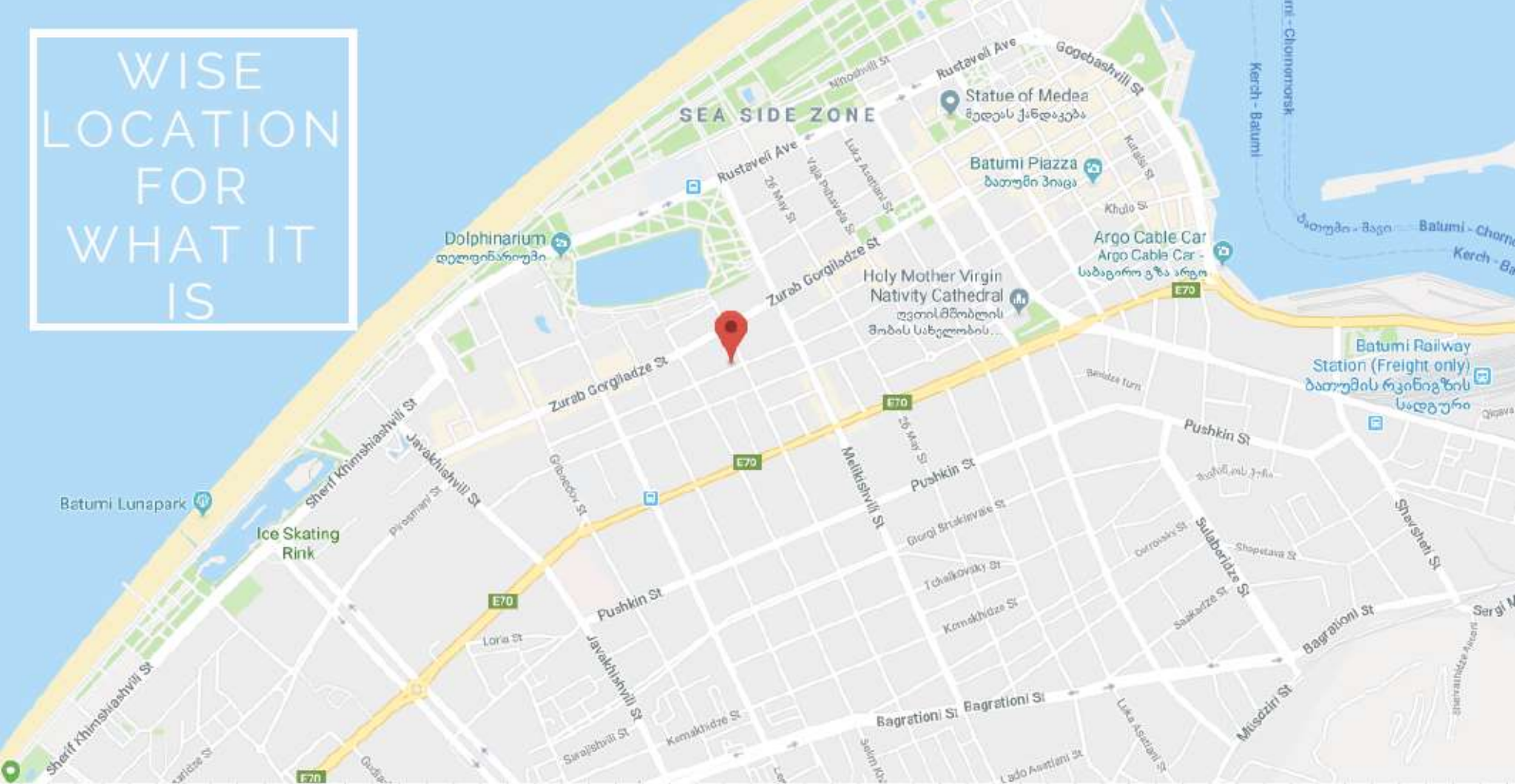
**INSTALLMENT  
WITH 0%  
INTEREST**

WHEN FULL PURCHASE PRICE  
IS PAID BY DECEMBER 2019.  
WITH 30% DOWN PAYMENT  
DUE AT SIGNING, AND  
MONTHLY PAYMENTS BEGIN  
THE FOLLOWING MONTH.

**CASH**

FULL PURCHASE PRICE  
PAID IN ONE PAYMENT  
AT SIGNING.  
DISCOUNT IS  
AVAILABLE.

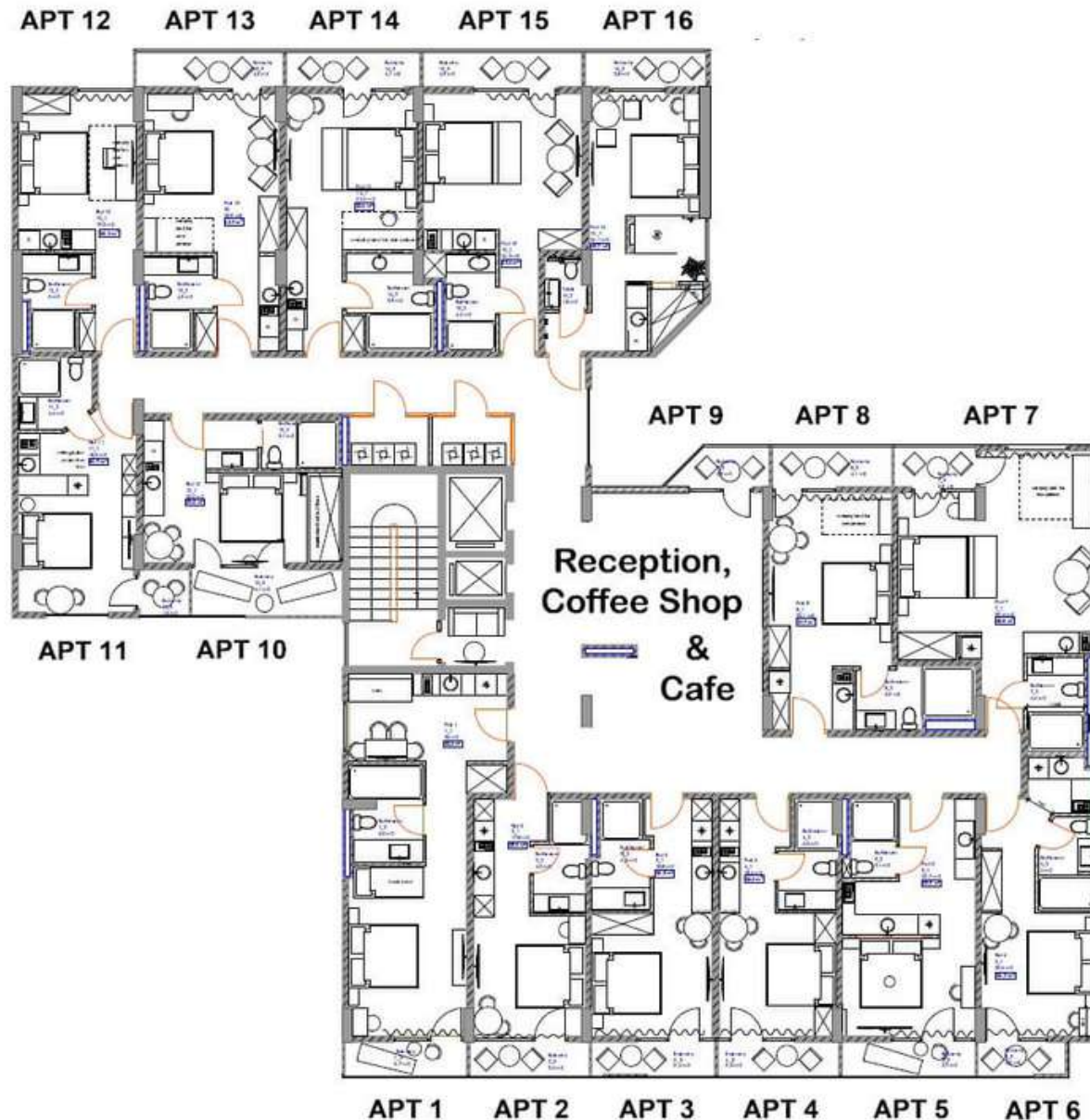
# WISE LOCATION FOR WHAT IT IS



THIS PARTICULAR PROPERTY WAS CHOSEN 100% DUE TO LOCATION. ANYONE TRAVELING TO BATUMI FOR AN EVENT OR BUSINESS, WHO WANTS TO STAY WITHIN WALKING DISTANCE OF EVERYTHING IMPORTANT, WILL QUICKLY APPRECIATE MIDTOWN PARADISE. IT IS WITHIN WALKING DISTANCE OF THE OLD CITY, BEACH BOULEVARD, SHOPPING, ENTERTAINMENT, DINING, BANKING, LEGAL, AND BUSINESS CENTERS. WHEN CONVENIENCE MATTERS, AND QUALITY IS A MUST, THIS PROPERTY WILL DELIVER ABOVE AND BEYOND WHAT IS EXPECTED. WE FULLY ANTICIPATE THIS BOUTIQUE APARTHOTEL TO BE IN HIGH DEMAND ALL YEAR ROUND DUE TO ITS LOCATION AND VALUE FOR THE MONEY.



# LAYOUT



EACH APARTMENT WAS THOUGHTFULLY PLANNED BY A TEAM OF PROFESSIONAL AMERICAN AND EUROPEAN INTERIOR DESIGNERS WHO SPECIALIZE IN LUXURIOUS HOTEL CONCEPTS



ADDRESS: 110, GORGASALI STR., BATUMI  
EMAIL: [INFO@BATUMIPARADISE.COM](mailto:INFO@BATUMIPARADISE.COM)  
WEBSITE: [BATUMIPARADISE.COM](http://BATUMIPARADISE.COM)